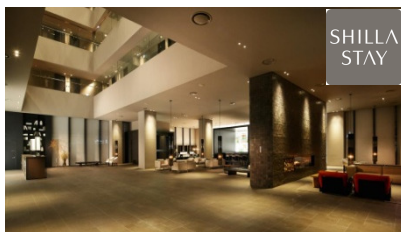
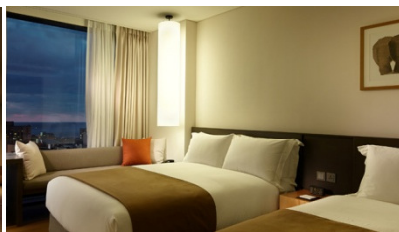




- ✓ 來回國泰/國泰港龍航空經濟客位機票  
Round trip economy class air ticket on CX/KA
- ✓ 2晚酒店住宿 2 nights hotel accommodation



SHILLA STAY

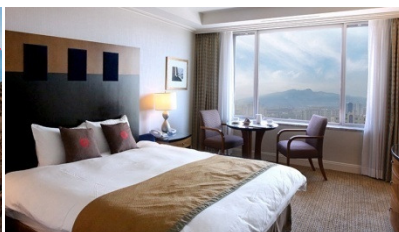


## Shilla Stay

[www.shillastay.com/jeju/index.do?lang=zh](http://www.shillastay.com/jeju/index.do?lang=zh)

濟州市區

每位 HK\$ **4,350+**  
(成人佔半房)

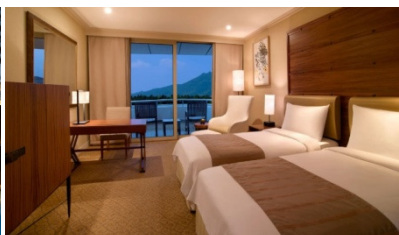
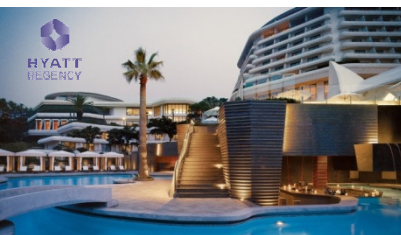


## Ramada Plaza

[www.ramadajeju.co.kr/CHN](http://www.ramadajeju.co.kr/CHN)

濟州市區

每位 HK\$ **4,480+**  
(成人佔半房)



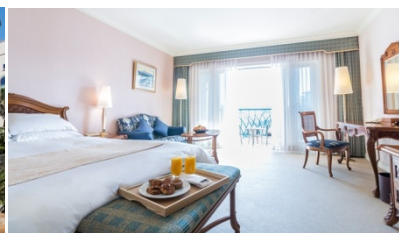
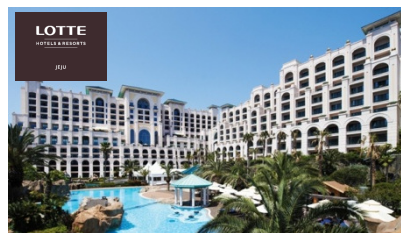
## Hyatt Regency

<https://jeju.regency.hyatt.com/en/hotel/home.html>

西歸浦市

至7月及9月: 每位 HK\$ **4,920+**  
(成人佔半房)

7-8月: HK\$ **5,060+**  
(成人佔半房)



## Lotte

[www.lottehotel.com/jeju/en/Default.asp](http://www.lottehotel.com/jeju/en/Default.asp)

西歸浦市

每位 HK\$ **5,330+**  
(成人佔半房)

※ 套票以淡季價格計算，於旺季、週末、假期前夕或大型節日期間出發，需另付附加費。詳情向本社職員查詢作準。

# 國泰/國泰港龍航空 酒店套票精選 · 濟州 Jeju

3日2夜 [出發日期：至2019年9月30日] | 3 Days 2 Nights [Travel period : Till 30Sep19]



涉地可支

## 國泰/國泰港龍 濟州機票附加費表

CX/KA Jeju Airfare Surcharge

出發日期: 2019年7月15日- 9月30日

Travel Period : 15Jul – 30Sep2019

2 人成行 GV2 (min. 2 adults)					
Departure	Adult	Child	Booking Class	Ticket Validity	
Early Bird Promotion					
23Aug-26Sep, 29-30Sep	LESS	\$1610	\$1200	Q	2-7 Days
		1210	900	N	
Ticket must be issued on or before 30Jun					
23Aug-30Sep	--	--	S	2-7 Days	
15Jul-22Aug	1290	970	L	2-7 Days	

### Price Includes :

- Round trip economy class air ticket on CX or KA
- 2 nights hotel accommodation
- HK\$100,000 Travel Insurance [Zurich Insurance (Hong Kong) 24-hour emergency hotline+852-2886-3977]
- 0.15% TIC Levy

### Child travel with min. 2 adults price:

- Twin Sharing/Extra bed adult price less: \$810

### Terms & Conditions :

- Package price is per person ( in HK\$ ) and valid between **15Jul-30Sep19**; and hotel stay must be completed by 30Sep
- Booking class : S (except specified period) Ticket validity : 2-7 days
- Minimum 2 adults travelling together on same outbound & inbound flights, and booking must be reserved under the same record locator (PNR) for all passengers
- "OSI: CX/KA GV2 FARE IN DATE OUT DATE AT HOTEL NAME" must be input in OSI field of PNR
- Twin room is based on 2 single beds or 1 double bed
- Check whether the Security Bureau has issued any [Outbound Travel Alert](#) for your destination before firming up your travel plan to ensure personal safety
- Hotel star ratings are for reference only, please visit hotel's official website for more information
- Airport tax, HK security charge & fuel surcharge(if any) are not included
- Upon confirmation, any amendment is subject to company's discretion
- All prices and conditions are subject to change without prior notice

### 費用包括：

- 來回國泰或國泰港龍航空經濟客位機票
- 兩晚酒店住宿
- HK\$100,000旅遊保險[蘇黎世保險(香港) 24小時緊急支援服務+852-2886-3977]
- 0.15%旅遊業賠償基金

### 小童最少要與兩位成人同行價錢：

- 佔床或加床收費按成人減收： \$810

### 條款及細則：

- 以上套票價錢以每成人計算，有效日期為2019年7月15日至9月30日；酒店入住必於9月30日或之前完成
- 訂位代號：S (指定日子除外) 機票有效期：2-7日
- 來回程均要最少兩位成人同行，訂位時亦必須最少兩位客人在同一個PNR內
- PNR必須註明住宿酒店名稱及日期如下：  
"OSI: CX/KA GV2 FARE IN DATE OUT DATE AT HOTEL NAME"
- 雙人房之房種為2張單人床或1張雙人床
- 為確保自身安全，旅客在落實行程前，應留意保安局有沒有對目的地發出**外遊警示**
- 酒店星級只供參考，詳情請到訪酒店官方網頁查詢
- 費用並未包括兩地機場稅，香港機場保安稅及燃油附加費(如適用)
- 於機票及酒店確認後，如需更改本公司擁有最終決定權
- 所有費用如有更改，恕不另行通知